

DETAIL - "A"

MATERIAL OF ROLL	TUBE AS PER IS 9295-1993 TUBE THK.-6.3 mm
SHAFT Ø	Ø30 mm (C-40, IS 9550)
BEARING	DEEP GROOVE BALL BEARING SKF/FAG 6306 ZZ
ROLL MOUNTING	DROP IN SLOT TYPE
TYPE OF FRAME	CHANNEL BASE
LUBRICATION	LUBRICATED FOR LIFE SERVO GEM EP-2

NOTE :-

- 1) ALL ROLLER AND HANGER/FRAME SHOULD BE PAINTED WITH ONE COAT OF ZINC CHROMATE PRIMER AND TWO COATS OF SYNTHETIC ENAMEL PAINT.
- 2) ROLLER SHOULD BE GREASE PACKED AND SEALED FOR LIFE. ROLLER SHOULD BE PROVIDED WITH A MULTI-LABYRINTH NON CONTACT TYPE SEAL TO KEEP DUST AND MOISTURE AWAY FROM THE ROLLER BEARING. WATER PROOF WEATHER CAP TO BE PROVIDED AT THE ROLLER END TO PREVENT WATER ENTERING FROM OUT SIDE. ROLLER SHOULD BE PROVIDED WITH BACK SEAL TO PREVENT GREASE ENTERING INSIDE THE ROLLER.

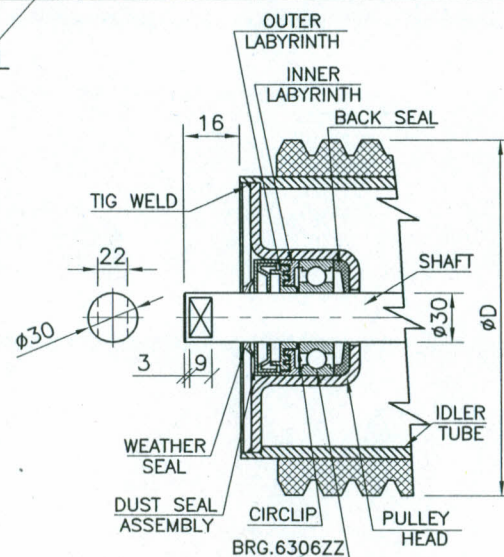
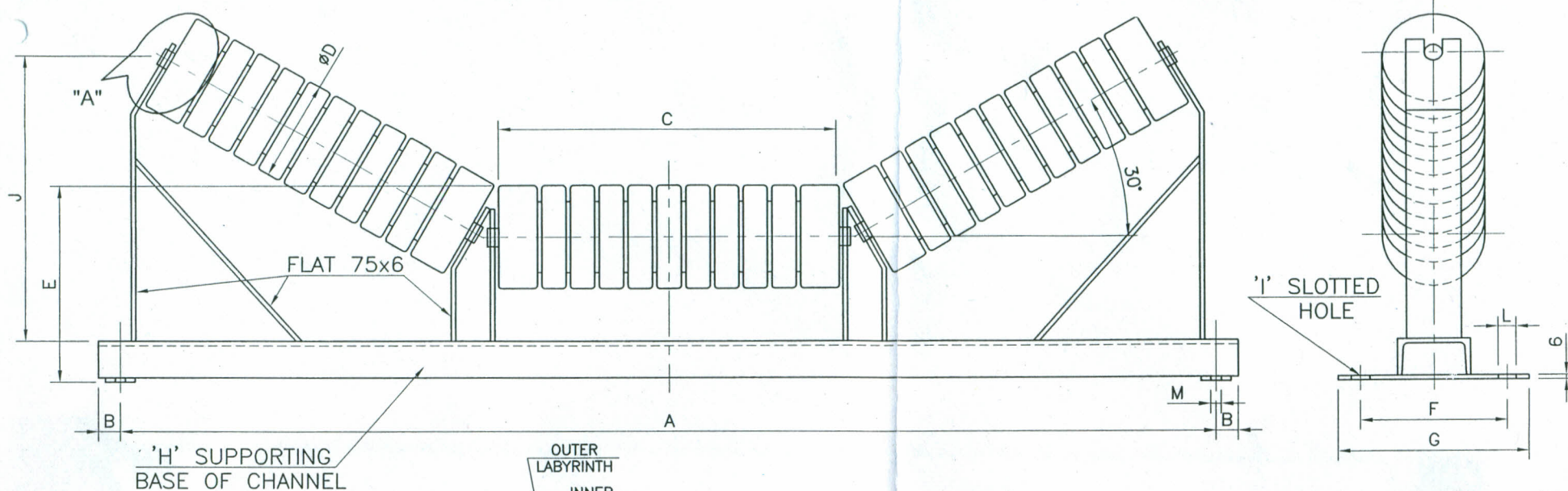
BELT SIZE	A	B	C	ØD	E	F	G	BASE 'H'	I	J	M	L
1000	1290	30	380	127	275	200	260	100 x 50	M12	348	14	25
1200	1490	30	465	139.7	275	200	260	100 x 50	M16	380	18	25
1400	1690	30	530	139.7	290	200	260	125 x 65	M16	408	18	25
1600	1900	30	600	152.4	300	200	260	150 x 75	M16	448	18	30

2	SKG	04.03.14	DIMENSION CHANGED
REV	REV. BY	DATE	DESCRIPTION



URANIUM CORPORATION OF INDIA LTD. TURAMDHI MINES
(A GOVT. OF INDIA ENTERPRISE, DEPT. OF ATOMIC ENERGY)

DRN.	Rajesh	20.10.11	TITLE
CHECKED			TROUGHING IDLER
APPROVED	SKG		
SCALE - NTS			
DIMENSIONS IN MM			DRG.NO.- UCT-I / MECH/CONV./ IDLER /52



DETAIL - "A"

MATERIAL OF ROLL	TUBE AS PER IS 9295-1993
PROPERTIES OF RUBBER	TENSILE STRENGTH-180 KG/CM ² MIN, REBOUND RESILIENCE:55% ELONGATION-550 % MIN.
SHAFT Ø	Ø30 mm (C-40, IS 9550)
BEARING	DEEP GROOVE BALL BEARING SKF/FAG 6306 ZZ
ROLL MOUNTING	DROP IN SLOT TYPE
TYPE OF FRAME	CHANNEL BASE
LUBRICATION	LUBRICATED FOR LIFE SERVO GEM EP-2

NOTE :-

- 1) ALL ROLLER AND HANGER/FRAE SHOULD BE PAINTED WITH ONE COAT OF ZINC CHROMATE PRIMER AND TWO COATS OF SYNTHETIC ENAMEL PAINT .
- 2) ROLLER SHOULD BE GREASE PACKED AND SEALED FOR LIFE. ROLLER SHOULD BE PROVIDED WITH A MULTI-LABYRINTH NON CONTACT TYPE SEAL TO KEEP DUST AND MOISTURE AWAY FROM THE ROLLER BEARING. WATER PROOF WEATHER CAP TO BE PROVIDED AT THE ROLLER END TO PREVENT WATER ENTERING FROM OUT SIDE ROLLER SHOULD BE PROVIDED WITH BACK SEAL TO PREVENT GREASE ENTERING INSIDE THE ROLLER.

BELT SIZE	A	B	C	ØD	TUBE O.D. x THK.	E	F	G	BASE 'H'	I	J	M	L
1000	1290	30	380	152	88x6.3	275	200	260	100 x 50	M12	348	14	25
1200	1490	30	465	190	139x6.3	275	200	260	100 x 50	M16	380	18	25
1400	1690	30	530	190	139x6.3	290	200	260	125 x 65	M16	408	18	25

3	SKG	04.03.14	DIMENSION CHANGED
REV	REV.BY	DATE	DESCRIPTION



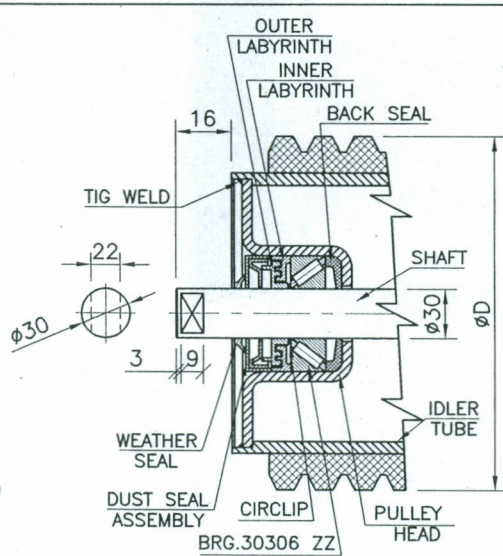
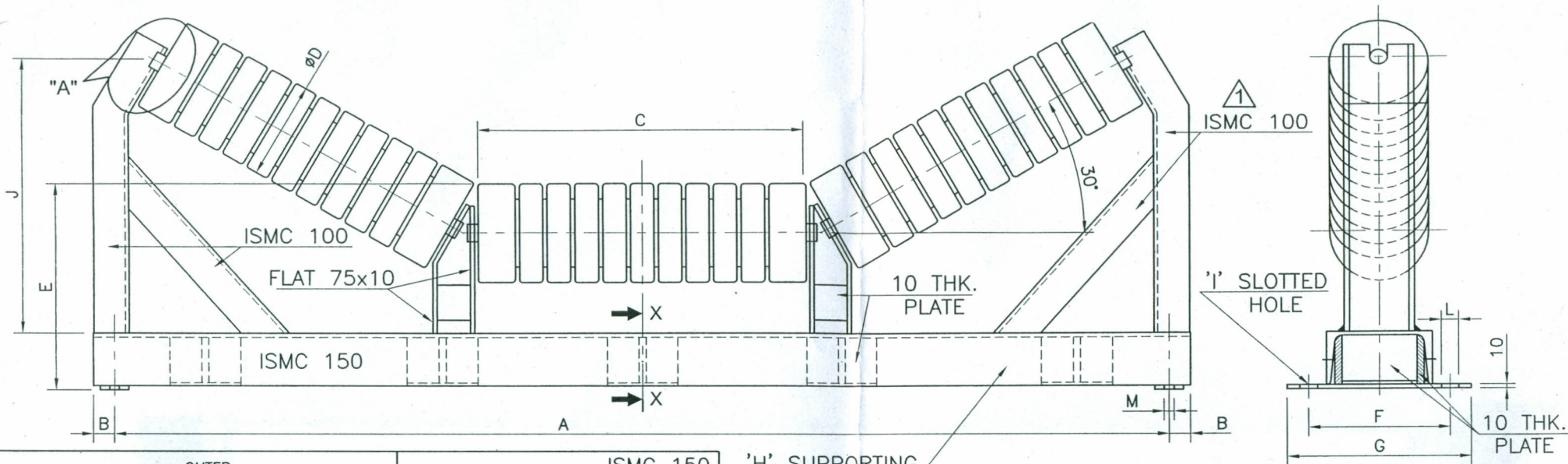
URANIUM CORPORATION OF INDIA LTD. TURAMDHI MINES

(A GOVT. OF INDIA ENTERPRISE, DEPT. OF ATOMIC ENERGY)

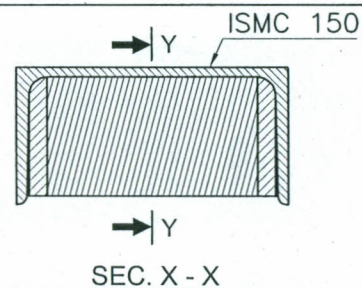
DRN.	Rajesh	20.10.11	TITLE
CHECKED			
APPROVED	SKG		
SCALE - NTS			
DIMENSIONS IN MM			

IMPACT IDLER

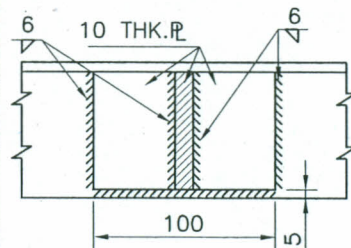
DRG.NO.- UCT-I / MECH/CONV./ IDLER /53 REV.- 3



DETAIL - "A"



SEC. X - X



SEC. Y - Y

'H' SUPPORTING
BASE OF CHANNEL

MATERIAL OF ROLL	TUBE AS PER IS 9295-1993
PROPERTIES OF RUBBER	TENSILE STRENGTH-180 KG/CM ² MIN, REBOUND RESILIENCE:60% ELONGATION - 550 % MIN.
SHAFT Ø	Ø30 mm (C-40, IS 9550)
BEARING	TAPER ROLLER BEARING SKF/FAG 30306 ZZ
ROLL MOUNTING	DROP IN SLOT TYPE
TYPE OF FRAME	REINFORCED CHANNEL BASE
LUBRICATION	LUBRICATED FOR LIFE SERVO GEM EP-2

NOTE :-

- 1) ALL ROLLER AND HANGER/FRAE SHOULD BE PAINTED WITH ONE COAT OF ZINC CHROMATE PRIMER AND TWO COATS OF SYNTHETIC ENAMEL PAINT .
- 2) ROLLER SHOULD BE GREASE PACKED AND SEALED FOR LIFE. ROLLER SHOULD BE PROVIDED WITH A MULTI-LABYRINTH NON CONTACT TYPE SEAL TO KEEP DUST AND MOISTURE AWAY FROM THE ROLLER BEARING. WATER PROOF WEATHER CAP TO BE PROVIDED AT THE ROLLER END TO PREVENT WATER ENTERING FROM OUT SIDE ROLLER SHOULD BE PROVIDED WITH BACK SEAL TO PREVENT GREASE ENTERING INSIDE THE ROLLER.

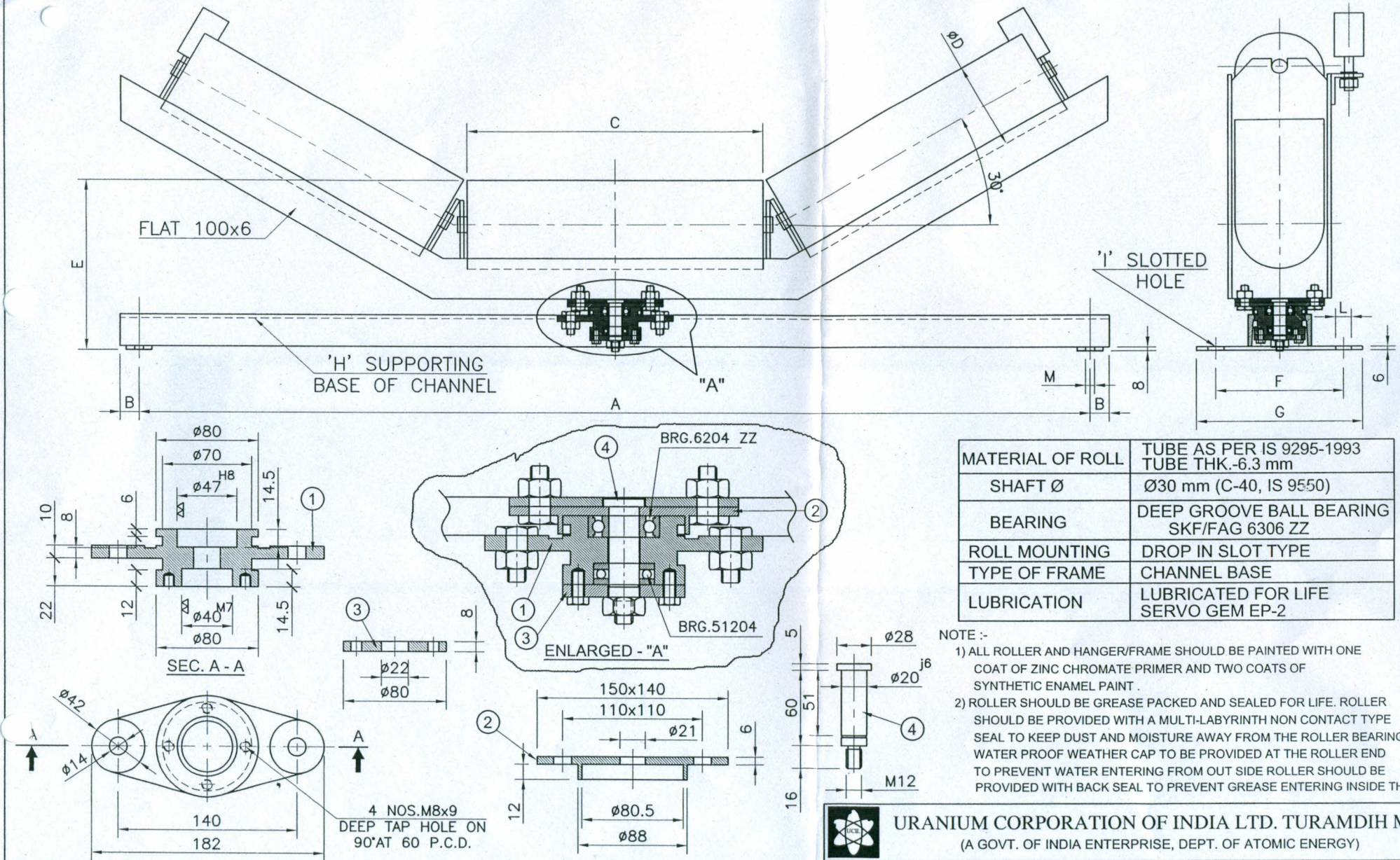
BELT SIZE	A	B	C	ØD	TUBE O.D. x THK.	E	F	G	BASE 'H'	I	J	M	L
1600	1900	30	600	190	139x6.3	300	200	260	150 x 75	M16	448	18	30



URANIUM CORPORATION OF INDIA LTD. TURAMDHI MINES
(A GOVT. OF INDIA ENTERPRISE, DEPT. OF ATOMIC ENERGY)

2	SKG	29.01.14	REINFORCED CHANNEL BASE DETAIL ADDED
1	SKG	10.08.13	DESIGN CHANGED (REPLACE FORM FLAT TO CHANNEL) BRG.CHANGED FROM 6306 ZZ TO 30306 ZZ
REV	REV.BY	DATE	DESCRIPTION

DRN.	Rajesh	20.10.11	TITLE
CHECKED			IMPACT IDLER FOR 1600 WIDTH BELT CONVEYOR
APPROVED	SKG		
SCALE - NTS			
DIMENSIONS IN MM			DRG.NO.- UCT-I/MECH/CONV./IDLER /53 A
			REV.- 2



MATERIAL OF ROLL	TUBE AS PER IS 9295-1993 TUBE THK.-6.3 mm
SHAFT Ø	Ø30 mm (C-40, IS 9550)
BEARING	DEEP GROOVE BALL BEARING SKF/FAG 6306 ZZ
ROLL MOUNTING	DROP IN SLOT TYPE
TYPE OF FRAME	CHANNEL BASE
LUBRICATION	LUBRICATED FOR LIFE SERVO GEM EP-2

NOTE :-

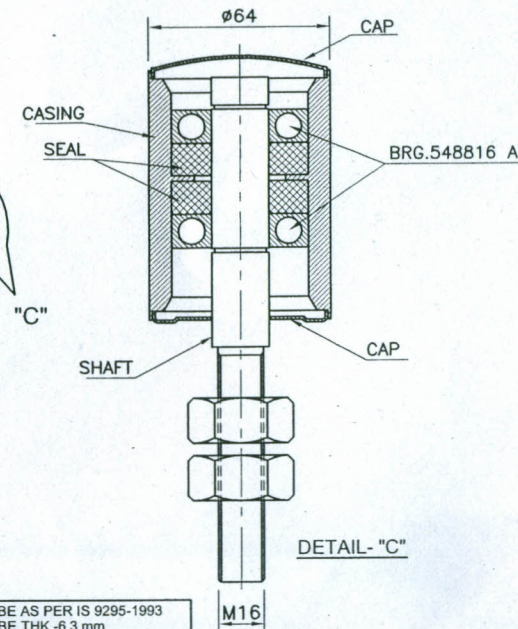
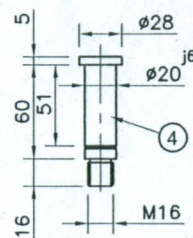
- 1) ALL ROLLER AND HANGER/FRAME SHOULD BE PAINTED WITH ONE COAT OF ZINC CHROMATE PRIMER AND TWO COATS OF SYNTHETIC ENAMEL PAINT.
- 2) ROLLER SHOULD BE GREASE PACKED AND SEALED FOR LIFE. ROLLER SHOULD BE PROVIDED WITH A MULTI-LABYRINTH NON CONTACT TYPE SEAL TO KEEP DUST AND MOISTURE AWAY FROM THE ROLLER BEARING. WATER PROOF WEATHER CAP TO BE PROVIDED AT THE ROLLER END TO PREVENT WATER ENTERING FROM OUT SIDE ROLLER SHOULD BE PROVIDED WITH BACK SEAL TO PREVENT GREASE ENTERING INSIDE THE ROLLER.



URANIUM CORPORATION OF INDIA LTD. TURAMDHI MINES
(A GOVT. OF INDIA ENTERPRISE, DEPT. OF ATOMIC ENERGY)

BELT SIZE	A	B	C	ØD	E	F	G	BASE 'H'	I	M	L	IDLER BRG. NO
1000	1290	30	380	127	275	200	260	100 x 50	M12	14	25	6306 ZZ
1200	1490	30	465	139.7	275	200	260	100 x 50	M16	18	25	6306 ZZ
1400	1690	30	530	139.7	290	200	260	125 x 65	M16	18	25	6306 ZZ
1600	1900	30	600	152.4	300	200	260	150 x 75	M16	18	30	6306 ZZ

DRN.	Rajesh	20.10.11	TITLE
CHECKED			SELF ALIGNING TROUGHING IDLER
APPROVED	SKG		
SCALE - NTS			
DIMENSIONS IN MM			DRG.NO.- UCT-I / MECH/CONV/ IDLER /54 REV.- 2



MATERIAL OF ROLL	TUBE AS PER IS 9295-1993 TUBE THK.-6.3 mm
SHAFT Ø	Ø30 mm (C-40, IS 9550)
BEARING	DEEP GROOVE BALL BEARING SKF/FAG 6306 ZZ
ROLL MOUNTING	DROP IN SLOT TYPE
TYPE OF FRAME	CHANNEL BASE
LUBRICATION	LUBRICATED FOR LIFE SERVO GEM EP-2

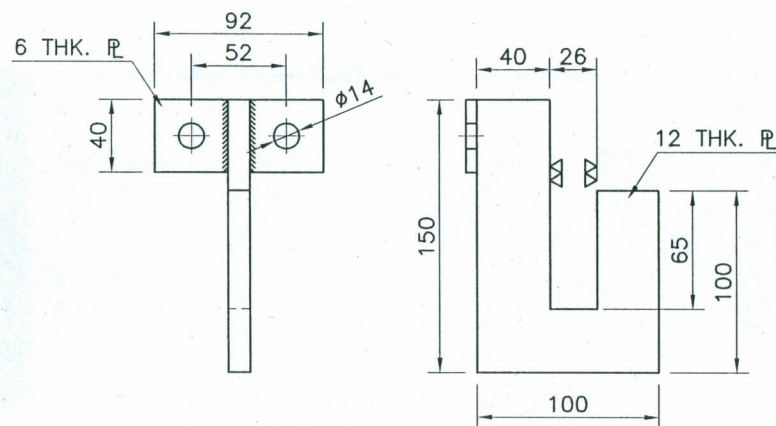
- 1) ALL ROLLER AND HANGER/FRAME SHOULD BE PAINTED WITH ONE COAT OF ZINC CHROMATE PRIMER AND TWO COATS OF SYNTHETIC ENAMEL PAINT .
- 2) ROLLER SHOULD BE GREASE PACKED AND SEALED FOR LIFE. ROLLER SHOULD BE PROVIDED WITH A MULTI-LABYRINTH NON CONTACT TYPE SEAL TO KEEP DUST AND MOISTURE AWAY FROM THE ROLLER BEARING. WATER PROOF WEATHER CAP TO BE PROVIDED AT THE ROLLER END TO PREVENT WATER ENTERING FROM OUT SIDE ROLLER SHOULD BE PROVIDED WITH BACK SEAL TO PREVENT GREASE ENTERING INSIDE THE ROLLER

BELT SIZE	A	B	C	ØD	E	K	L	M	IDLER BRG.NO
1000	1340	1290	1150	127	138	200	25	14	6306 ZZ
1200	1560	1490	1400	139.7	150	240	30	16	6306 ZZ
1400	1740	1690	1600	139.7	150	240	30	18	6306 ZZ
1600	1950	1900	1800	152.4	151	225	30	18	6306 ZZ

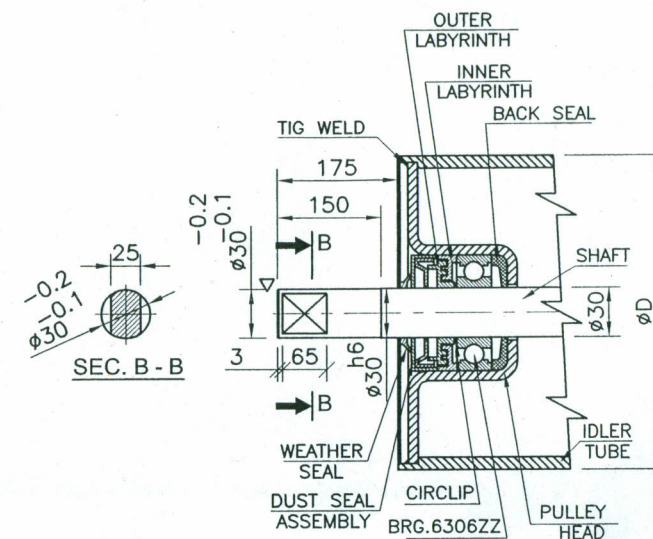


URANIUM CORPORATION OF INDIA LTD. TURAMDIH MINES
(A GOVT. OF INDIA ENTERPRISE, DEPT. OF ATOMIC ENERGY)

DRN.	Rajesh	11.11.11	TITLE	
CHECKED			<u>SELF ALIGNING RETURN IDLER</u>	
APPROVED	SKG			
SCALE - NTS				
DIMENSIONS IN MM			DRG.NO.- UCT-I / MECH/CONV./ IDLER /57	REV.- 1



BELT SIZE	A	B	ØD	IDLER BRG. NO.
1000	1150	1500	127	6306 ZZ
1200	1400	1750	139.7	6306 ZZ
1400	1600	1950	139.7	6306 ZZ
1600	1800	2150	152.4	6306 ZZ



MATERIAL OF ROLL	TUBE AS PER IS 9295-1993 TUBE THK.-6.3 mm
SHAFT Ø	Ø30 mm (C-40, IS 9550)
BEARING	DEEP GROOVE BALL BEARING SKF/FAG 6306 ZZ
ROLL MOUNTING	DROP IN SLOT TYPE
LUBRICATION	LUBRICATED FOR LIFE SERVO GEM EP-2

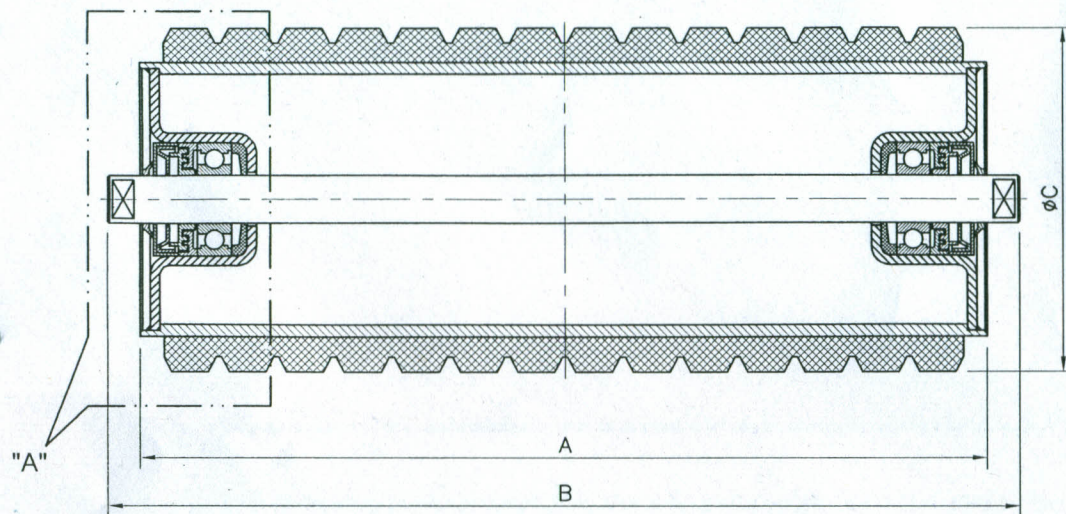
NOTE :-

- 1) ALL ROLLER AND HANGER/FRAME SHOULD BE PAINTED WITH ONE COAT OF ZINC CHROMATE PRIMER AND TWO COATS OF SYNTHETIC ENAMEL PAINT .
- 2) ROLLER SHOULD BE GREASE PACKED AND SEALED FOR LIFE. ROLLER SHOULD BE PROVIDED WITH A MULTI-LABYRINTH NON CONTACT TYPE SEAL TO KEEP DUST AND MOISTURE AWAY FROM THE ROLLER BEARING. WATER PROOF WEATHER CAP TO BE PROVIDED AT THE ROLLER END TO PREVENT WATER ENTERING FROM OUT SIDE ROLLER SHOULD BE PROVIDED WITH BACK SEAL TO PREVENT GREASE ENTERING INSIDE THE ROLLER.
- 3) ONE SET CONSISTS OF ONE ROLLER WITH SHAFT ASSEMBLY AND TWO M.S. MOUNTING BRACKET.

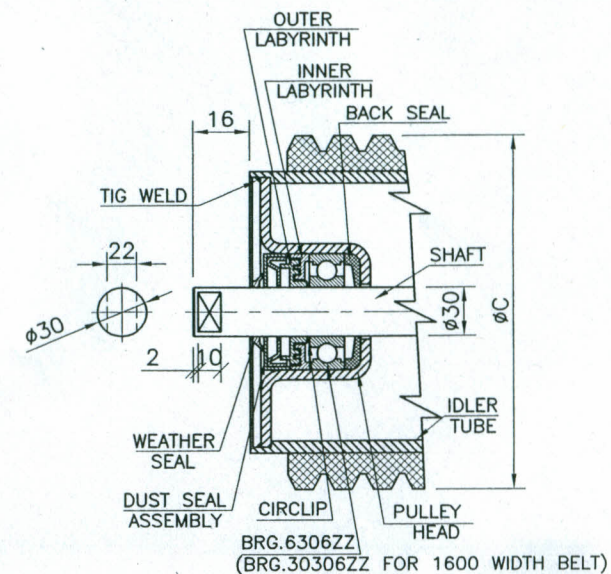


URANIUM CORPORATION OF INDIA LTD. TURAMDIH MINES
(A GOVT. OF INDIA ENTERPRISE, DEPT. OF ATOMIC ENERGY)

DRN.	Rajesh	20.10.11	TITLE	<u>RETURN IDLER</u>
CHECKED				
APPROVED	SKG			
SCALE - NTS				
DIMENSIONS IN MM				
			DRG.NO.- UCT-I/MECH/CONV./IDLER/64	REV.- 6



BELT SIZE	A	B	ØC	TUBE O.D.x THK.	IDLER BRG. NO
1000	380	412	152	88x6.3	6306 ZZ
1200	465	497	190	139x6.3	6306 ZZ
1400	530	562	190	139x6.3	6306 ZZ
1600	600	632	190	139x6.3	30306 ZZ



DETAIL - "A"

MATERIAL OF ROLL	TUBE AS PER IS 9295-1993
PROPERTIES OF RUBBER	TENSILE STRENGTH-180 KG/CM ² MIN, REBOUND RESILIENCE:55% ELONGATION-550 % MIN.
SHAFT Ø	Ø30 mm (C-40, IS 9550)
BEARING	DEEP GROOVE BALL BEARING SKF/FAG 6306 ZZ TAPER ROLLER BEARING SKF/FAG 30306 ZZ (ONLY FOR 1600 WIDTH BELT)
ROLL MOUNTING	DROP IN SLOT TYPE SERVO GEM EP-2
LUBRICATION	LUBRICATED FOR LIFE

- NOTE :-
- 1) ALL ROLLER SHOULD BE PAINTED WITH ONE COAT OF ZINC CHROMATE PRIMER AND TWO COATS OF SYNTHETIC ENAMEL PAINT.
 - 2) ROLLER SHOULD BE GREASE PACKED AND SEALED FOR LIFE. ROLLER SHOULD BE PROVIDED WITH A MULTI-LABYRINTH NON CONTACT TYPE SEAL TO KEEP DUST AND MOISTURE AWAY FROM THE ROLLER BEARING. WATER PROOF WEATHER CAP TO BE PROVIDED AT THE ROLLER END TO PREVENT WATER ENTERING FROM OUT SIDE ROLLER SHOULD BE PROVIDED WITH BACK SEAL TO PREVENT GREASE ENTERING INSIDE THE ROLLER.



URANIUM CORPORATION OF INDIA LTD. TURAMDIH MINES
(A GOVT. OF INDIA ENTERPRISE, DEPT. OF ATOMIC ENERGY)

DRN.	Rajesh	31.01.14	TITLE
CHECKED			
APPROVED	SKG		
SCALE - NTS			
DIMENSIONS IN MM			
			DRG.NO.- UCT-I/MECH/CONV./IDLER/183
			REV.- 0

REV	REV. BY	DATE	DESCRIPTION